

TECHNICAL INFORMATION

PRODUCT CODE:	H-700	T-500
DESCRIPTION	Holographic effect coating is formulated for gravure surface printing on PET films for getting holographic effect after metallization.	
APPLICATION	The coating is applied by the rotogravure printing process before the vacuum metallization. This could be achieved with a electromechanically engraved cylinder of 90 lines/cm, 30µm cell depth.	The coating is applied by the rotogravure printing process.
APPEARANCE:	Transparent/clear.	Transparent/clear.
SOLIDS:	23-25 %	18-20 %
PROPERTIES	T-7000 Coating has excellent rainbow effect after metallization. This can also be used for the spot holographic effect on PET film after metallization.	
SUBSTRATES:	T-7000 Coating is suitable for printing on PET substrate. In-line corona treatment is recommended for better results. The recommended adhesion of corona treatment level of PET is at 48-52 dynes/cm. Due to the great variety of substrates available in the market; always recommend that laboratory trials are done prior to the industrial printing.	
SOFTENING POINT:	120-135° Celsius	
VISCOSITY:	24±1 sec on ZAHN CUP 2 @25°C.	
DILUENTS:	MEK, Ethyl acetate, Toluene or mixtures of these.	Ethyl acetate, Toluene or mixtures of these.
WASH UP:	Ethyl Acetate.	Ethyl Acetate.
REDUCTION:	Reduction with ethyl acetate and toluene.	Reduction with toluene.
STORAGE:	Lacquer should be stored in a cool dry place in well-sealed containers.	Lacquer should be stored in a cool dry place in well-sealed containers.

TECHNICAL INFORMATION

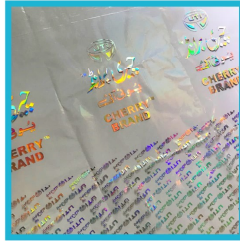
PRODUCT CODE:	M-4000
DESCRIPTION	M-4000 matt coating is high quality matt coating giving a smooth, non-streaking finish.
USES	Matt effect coating is formulated for gravure surface printing on PET and OPP films for getting high quality matt effect.
APPLICATION	The coating is applied by the rotogravure printing. This could be achieved with an electromechanically engraved cylinder of 90 lines/cm, 30µm cell depth.
APPEARANCE:	Milky white.
SOLIDS:	23-25 %
SUBSTRATES:	T-7000 Coating is suitable for printing on PET substrate. In-line corona treatment is recommended for better results. The recommended adhesion of corona treatment level of PET is at 48-52 dynes/cm. Due to the great variety of substrates available in the market; always recommend that laboratory trials are done prior to the industrial printing.
VISCOSITY:	22±1 sec on ZAHN CUP 2 @25°C.
DILUENTS:	MEK, Ethyl acetate, Toluene or mixtures of these.
WASH UP:	Ethyl Acetate.
REDUCTION:	Reduction with ethyl acetate and toluene.
STORAGE:	Lacquer should be stored in a cool dry place in well-sealed containers.

This information has been carefully compiled from experience gained in field conditions and detailed laboratory testing. However, the product's performance and its suitability for the customer's purchase depends on the particular conditions of use and the material being printed. We recommend that customers satisfy themselves that each product meets their requirements in all respects before commencing a print run. Since we cannot anticipate or control the conditions under which our products are used, it is not possible to guarantee their performance. We would point out that information contained in this leaflet is only a recommendation, and may need to be altered to suit the conditions and efficiency of the equipment employed.

OUR CUSTOMERS:



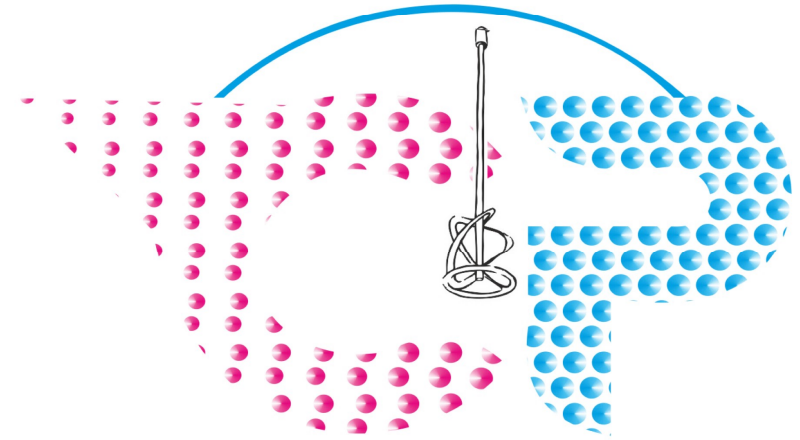
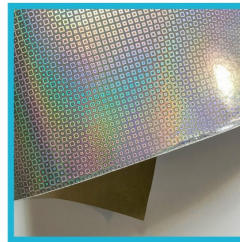
H-7000:



M-4000:



T-5000:



COATING PHARMACY

Innovation in Coating

✉ coating.pharmacy@gmail.com ☎ 0312 2828564

📍 B-39, SITE, Karachi (Near Pakistan Cables)